

# No Printers Available

Article Number: 171 | Rating: Unrated | Last Updated: Mon, Jul 10, 2017 at 4:05 PM

The fault symptoms are likely to be that the printers are visible (but unavailable) under Windows *System Settings*, but none visible when trying to print from an application such as Word.

A proven fix was found [here](#), but the text follows:

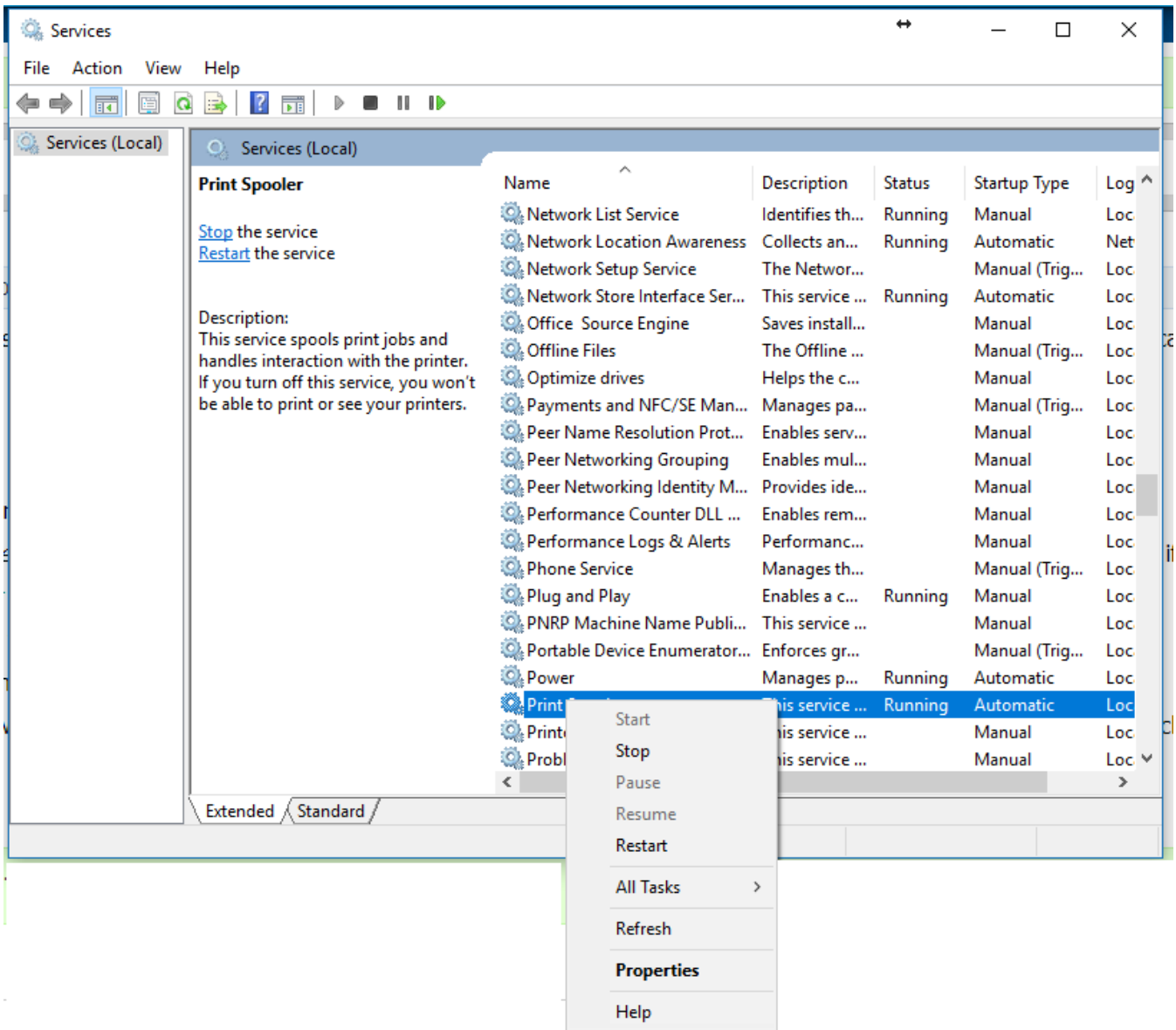
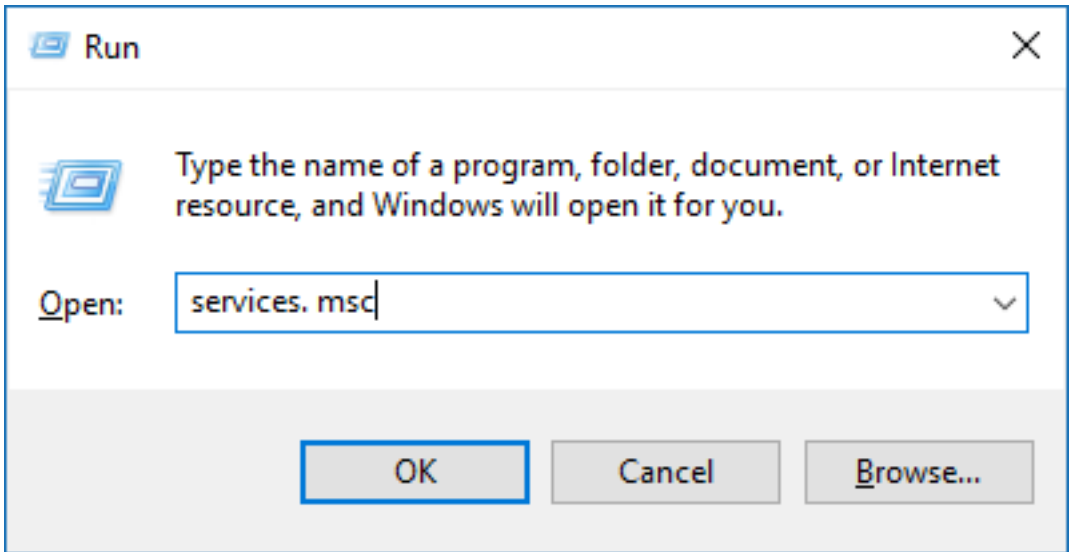
Check the print spooler is running:

1. Go to *Start* and type *services.msc*; click *OK*;
2. Scroll down and find the *Printer Spooler* service in the *Name* column;
3. Right click on *Printer Spooler* and select *Properties*. Choose *automatic* for *Startup* type. Check *Service Status*, if service is stopped, click on *Start* and *OK*. However, if the service is apparently already running, stop it and restart it;

Check for dependencies - while in the *Print Spooler* service properties:

4. Click the *Dependencies* tab. The first box lists all the system services that must be running for *Print Spooler* to start. These are the dependencies.
5. Make a note of each service and go back to the main list;
6. Go through the list and start each service upon which *Print Spooler* is dependent (if the service is not already started). If a service was not started, right-click it, click *Properties* and then confirm that the *Startup* type is *Automatic*.

Reboot the PC and test.



Posted - Mon, Jul 10, 2017 at 11:05 AM. This article has been viewed 1665 times.

Online URL: <https://knowledgebase.stickman.co.uk/article.php?id=171>