

Xerox Phaser 3200 Printer Offline

Article Number: 112 | Rating: Unrated | Last Updated: Wed, Jun 14, 2017 at 1:47 PM

There is a quirk with Xerox Phaser 3200 printers in that they can appear to be permanently offline and unreachable. First of all, check for sure that it is not sleeping by pressing any standby button on it; though sending an item to print should wake it.

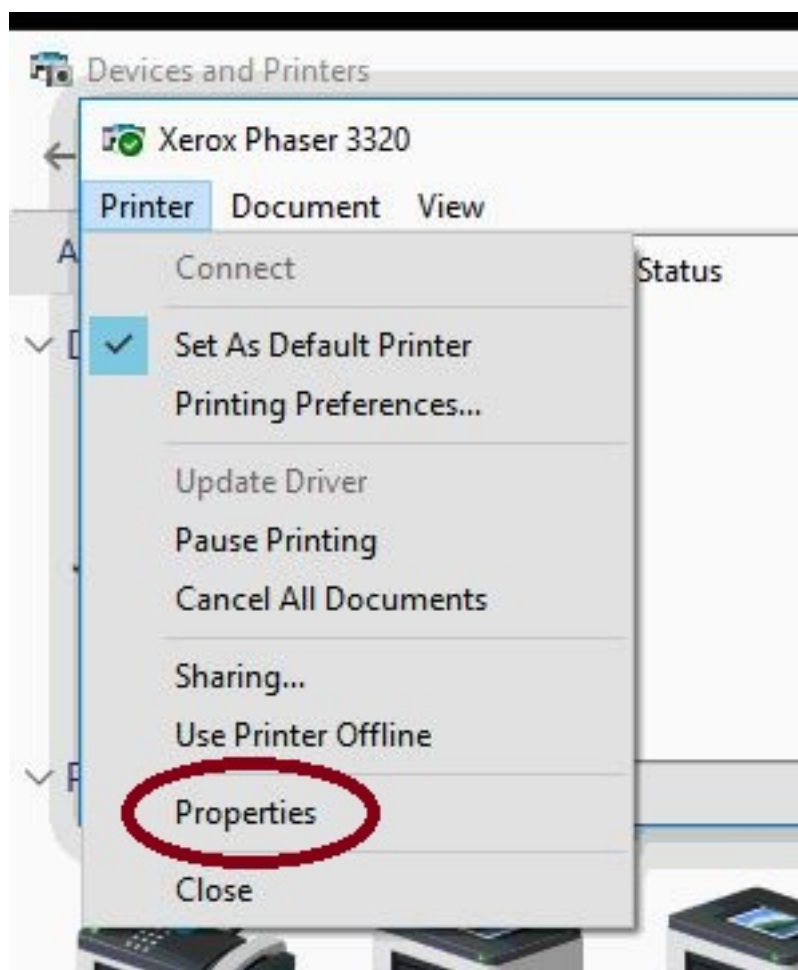
Assuming the fault remains, try:

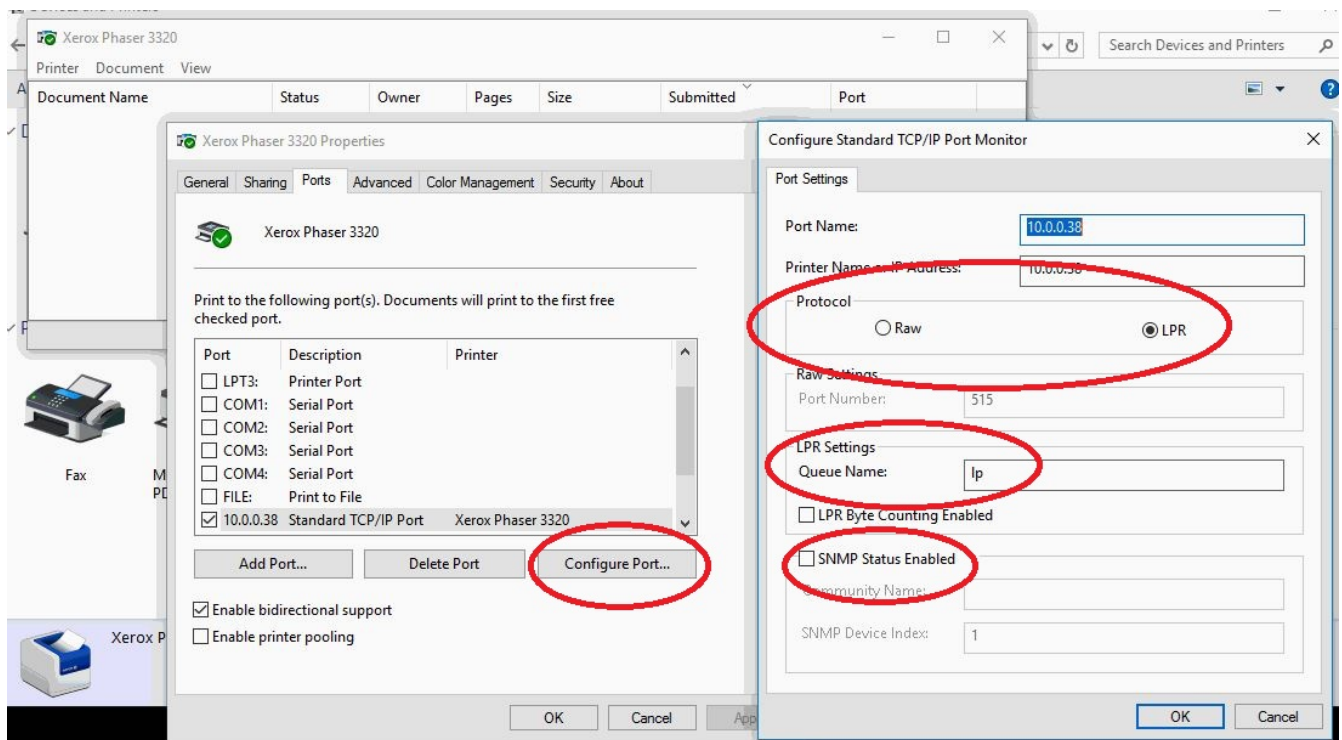
1. Opening *Devices and Printers*, right-click the printer;
2. Select *See what's printing*;
3. In the next window - which might show a list of items in the print queue - select *Properties*;
4. In the next window, go to the *Ports* tab;
5. Select *Configure Port...*;
6. The likeliest fix is to untick *SNMP Status Enabled*;
7. If this doesn't work, go back through this process and set *LPR* protocol (instead of *RAW*); and name the queue *lp* in the *LPR Settings>Queue Name* box.



- Open
- Open in new window
- See what's printing**
- ✓ Set as default printer
- Printing preferences
- Printer properties
- Create shortcut
- Remove device
- Troubleshoot
- Properties

Category: Pri
Status: 0 c





Posted - Tue, Jun 13, 2017 at 3:49 PM. This article has been viewed 20899 times.

Online URL: <https://knowledgebase.stickman.co.uk/article.php?id=112>